



COLDTUB App and Web Connect to mycoldtub.com

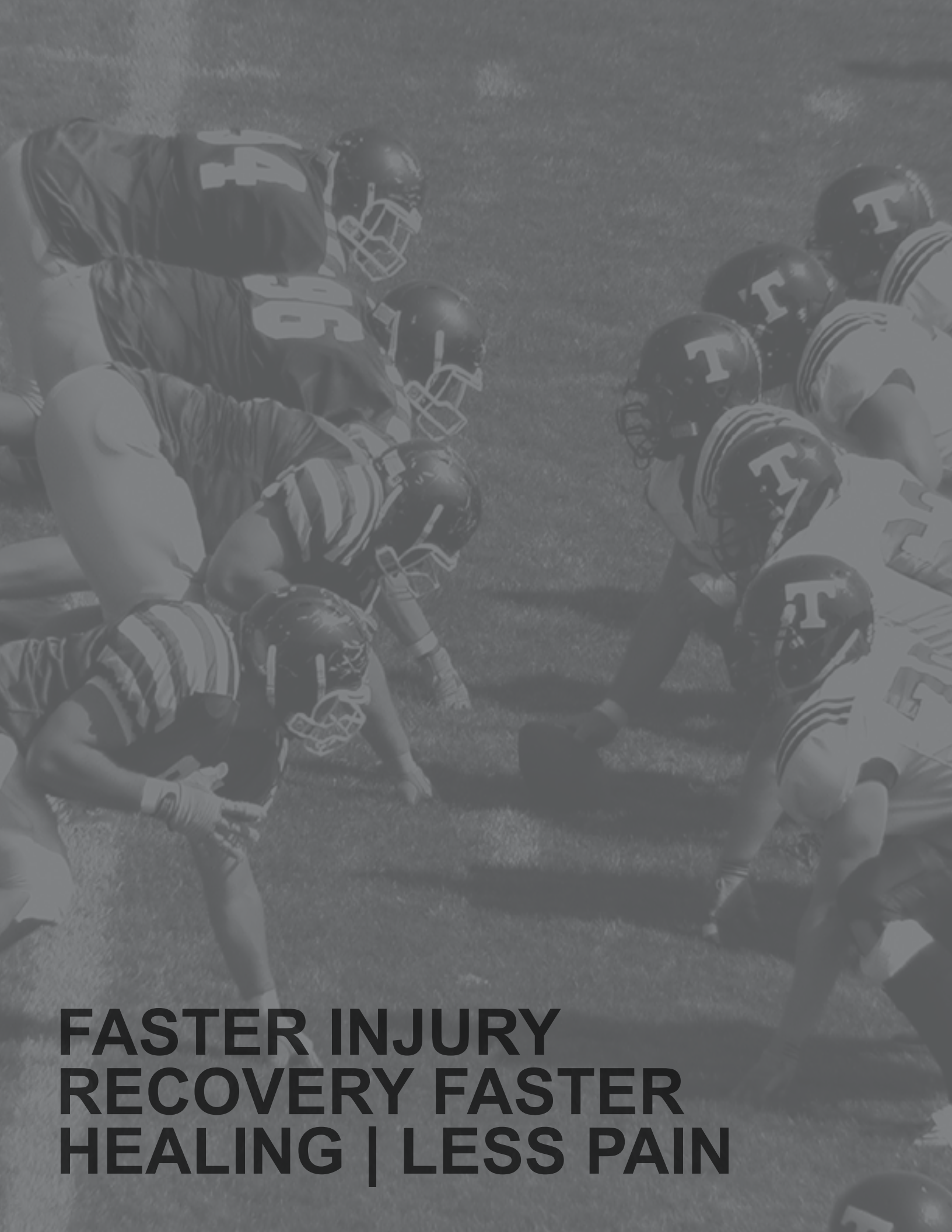
User Guide



For COLDTUBs Configured with WIFI Capability.



** Apps available for iPhone & iPad.*



**FASTER INJURY
RECOVERY FASTER
HEALING | LESS PAIN**

Table of Contents

1	COLDTUB App and Web Connect User Guide	4
1.1	COLDTUBs App?	4
1.2	What is Web Connect?	4
1.3	What is WIFI Extender?	4
1.4	What is a Network Connection Through LAN Cable?	5
1.5	What does Web Connect Do?	5
1.6	What is mycoldtub.com?	5
1.7	Web Connect Interface Through WIFI Extender	6
1.8	Web Connect Interface Through LAN Cable	6
1.9	COLDTUB App QRC Through WIFI Extender Flowchart	7
1.10	COLDTUB App QRC Through LAN Cable Flowchart	8
1.11	How to connect Your COLDTUB to the My COLDTUBs Server Flowchart	9
1.12	My COLDTUB	10
1.12.1	Home Page	11
1.12.2	New User Registration	11
1.12.3	Login First Time	12
1.12.4	Register a COLDTUB	13
1.12.5	Login	14
1.12.6	My COLDTUB - Logged In	14
1.13.1	Settings	15
1.13.2	Documentation	15
1.13.3	Error Codes	16
1.13.4	About	16
1.13.5	Profile	17
1.13.6	Diagnostics	17
1.13.7	Logout	17
1.14	COLDTUB Wifi Extender Quick Reference	18

1 COLDTUB App and Web Connect User Guide

This User Guide provides the COLDTUB owner information on how to connect their COLDTUB to their network and the My COLDTUB Server allowing the COLDTUB owner access to the full benefits of COLDTUB App, Web Connect and owning a COLDTUB.

There are three steps involved in the complete connection process:

1. Download the free COLDTUBs App from your App Store.
2. Connect your network to your COLDTUB by WIFI Extender or LAN Cable. Once this is achieved COLDTUB App will function through your device allowing you to control your COLDTUB with your device locally (within your network WIFI range).
3. Connect your COLDTUB to the My COLDTUB Server through Web Connect which is achieved by opening a free User Account on the mycoldtub.com Web Page and registering your COLDTUB against the User Account raised. Once this is achieved, COLDTUB App will function through your device or computer allowing you to control your COLDTUB with your device or computer anywhere in the world where you have internet connection.

Note: If your COLDTUB is not optioned with WIFI capability for COLDTUB App, any COLDTUB can be upgraded to have the required COLDTUB App components installed. Please contact COLDTUB with the Serial Number of your COLDTUB.

1.1 COLDTUBs App?

The COLDTUB App provides total control of your COLDTUB remotely.

Allows you to:

- Activate the jets, lights.
- Check and adjust water temperature, filtration, salt water sanitizing system
- View your COLDTUBs power consumption detail.
- Play Music.
- Lock controls.
- Access COLDTUB owner manuals, quick reference cards, user guides and lots more.
- Access new features as added.

1.2 What is Web Connect?

Web Connect is the most ambitious extension of the COLDTUB App system, allowing an EcoPack equipped COLDTUB to establish a connection directly to the Internet. In doing so, the COLDTUB owner can log into the COLDTUB anywhere there is an Internet connection, and from the convenience of a smartphone, tablet or computer can monitor and adjust all major functions of the COLDTUB. Web Connect allows the user to have choice within this functionality, connect via the Cloud, WiFi or via the mycoldtub.com website.

Note: Before you can utilise Web Connect you must first connect your COLDTUB to your Network by WIFI Extender or LAN Cable.

1.3 What is WIFI Extender?

A Wi-Fi Extender, sometimes called a range expander, is a type of wireless repeater used to expand the reach of a wireless LAN.

1.4 What is a Network Connection Through LAN Cable?

An Ethernet cable which is directly connected to the RJ45 Port on your COLDTUBs Processor Card and the other end connected to an RJ45 Port on your Router. Where a new power cable needs to be run to your COLDTUB, it is also a good opportunity to run an Ethernet cable to your COLDTUB at the same time. Doing so achieves the best method of connecting your network to your COLDTUB.

1.5 What Does Web Connect Do?

- **Adjust basic COLDTUB functions, such as:**

1. Turn pumps on or off
2. View current status:
 - a. Chilling
 - b. Heating cycle
 - c. Filtration cycle
3. View current, and adjust temperature
4. Turn lighting systems on/off

- **Adjust Higher level functions such as:**

1. Adjust filtration cycle frequency and duration
2. Adjust Salt Water system output.
3. Monitor your COLDTUBs power consumption

- **Reference Functions, such as access:**

1. Owners Manuals.
2. Troubleshooting Guide, brochures and Quick Reference Cards (QRC).

1.6 What is mycoldtub.com?

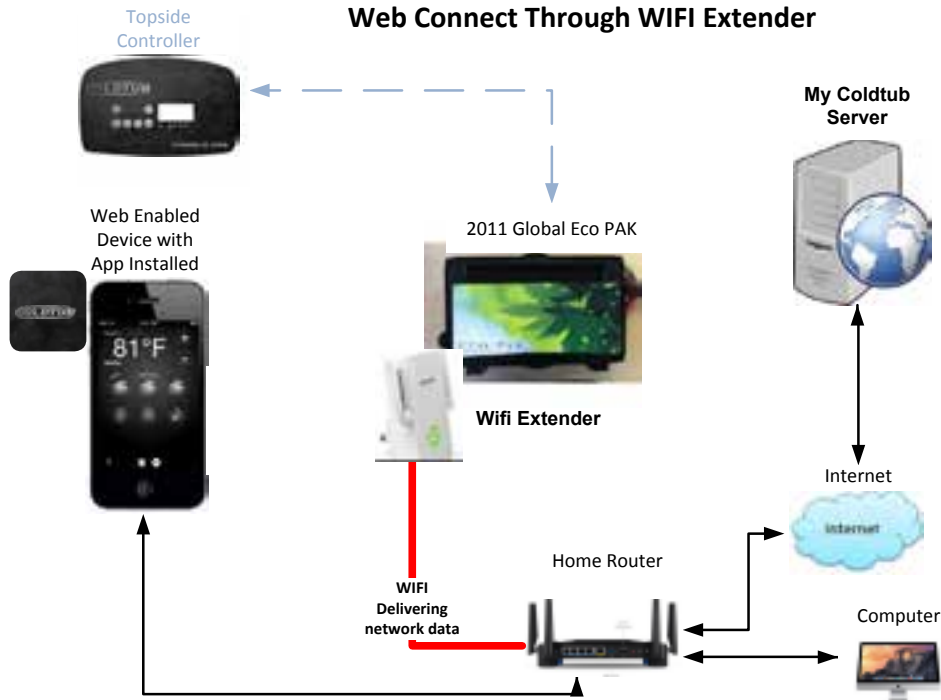
Mycoldtub.com is a Web based after sales support system designed and built by COLDTUB especially for COLDTUB owners that are utilising the COLDTUB App.

Mycoldtub.com through Web Connect allows the COLDTUB owner to log into their COLDTUB anywhere in the world where they have Internet connection, and from the convenience of a smartphone, tablet or computer can monitor and adjust all major functions of the COLDTUB. Web Connect allows the user to have choice within this functionality, connect via the Cloud, WiFi or via the mycoldtub.com website.

Web Address is: www.mycoldtub.com

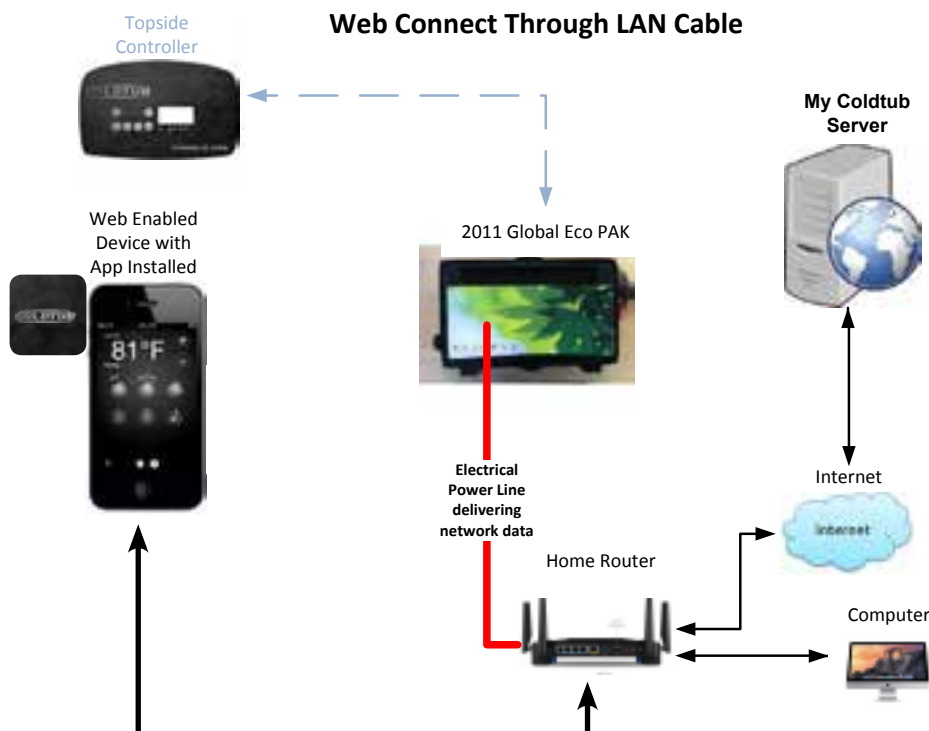
1.7 Web Connect Interface Through WIFI Extender

The following diagram reflects COLDTUB App interface with Web Connect through WIFI Extender.



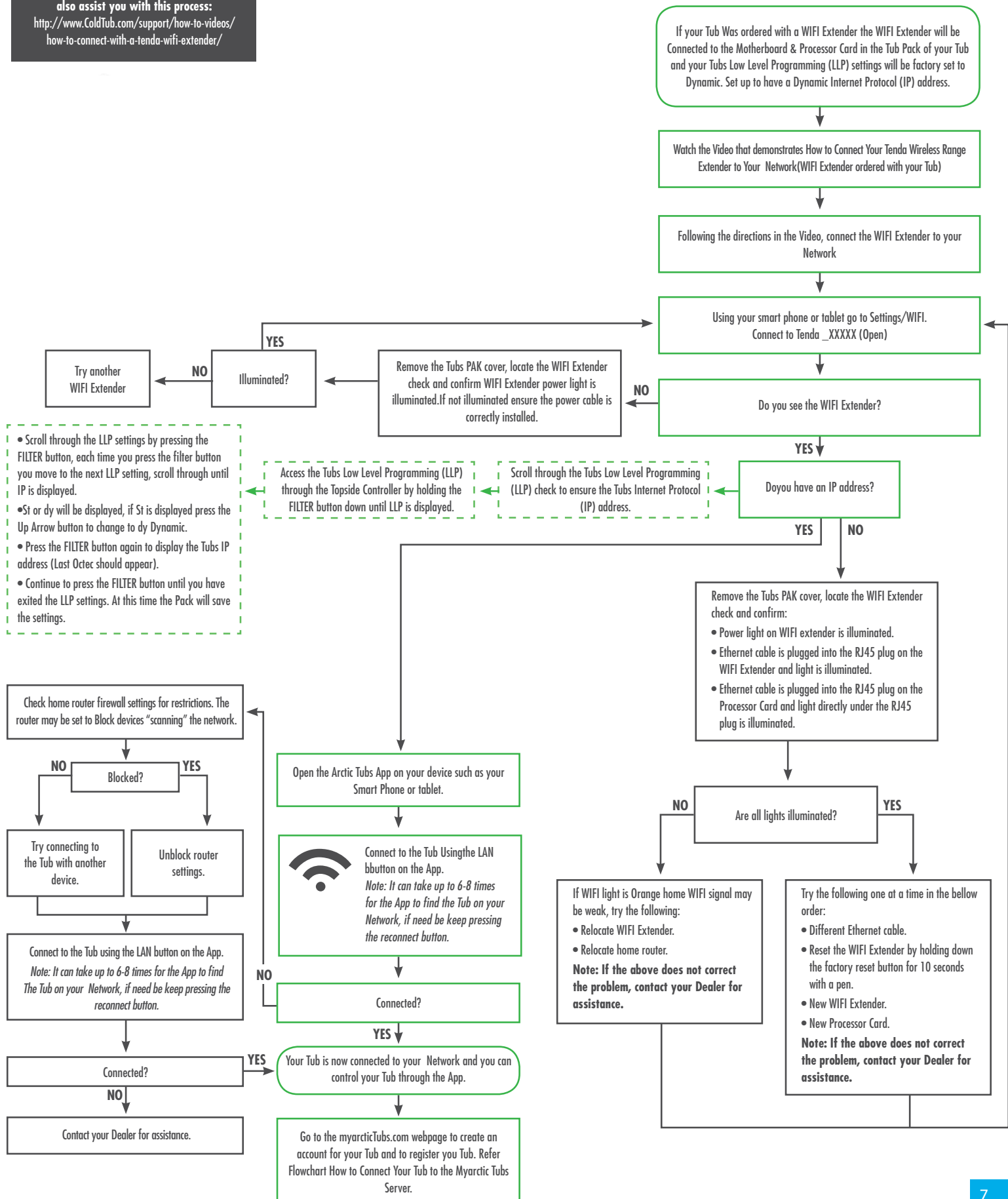
1.8 Web Connect Interface Through LAN Cable

The following diagram reflects COLDTUB App interface with Web Connect through a LAN Cable connected to the COLDTUBs Processor Card and home Router



The following flowchart shows how to connect COLDTUB App through WIFI Extender.

<http://www.ColdTub.com/support/how-to-videos/how-to-connect-with-a-tenda-wifi-extender/>

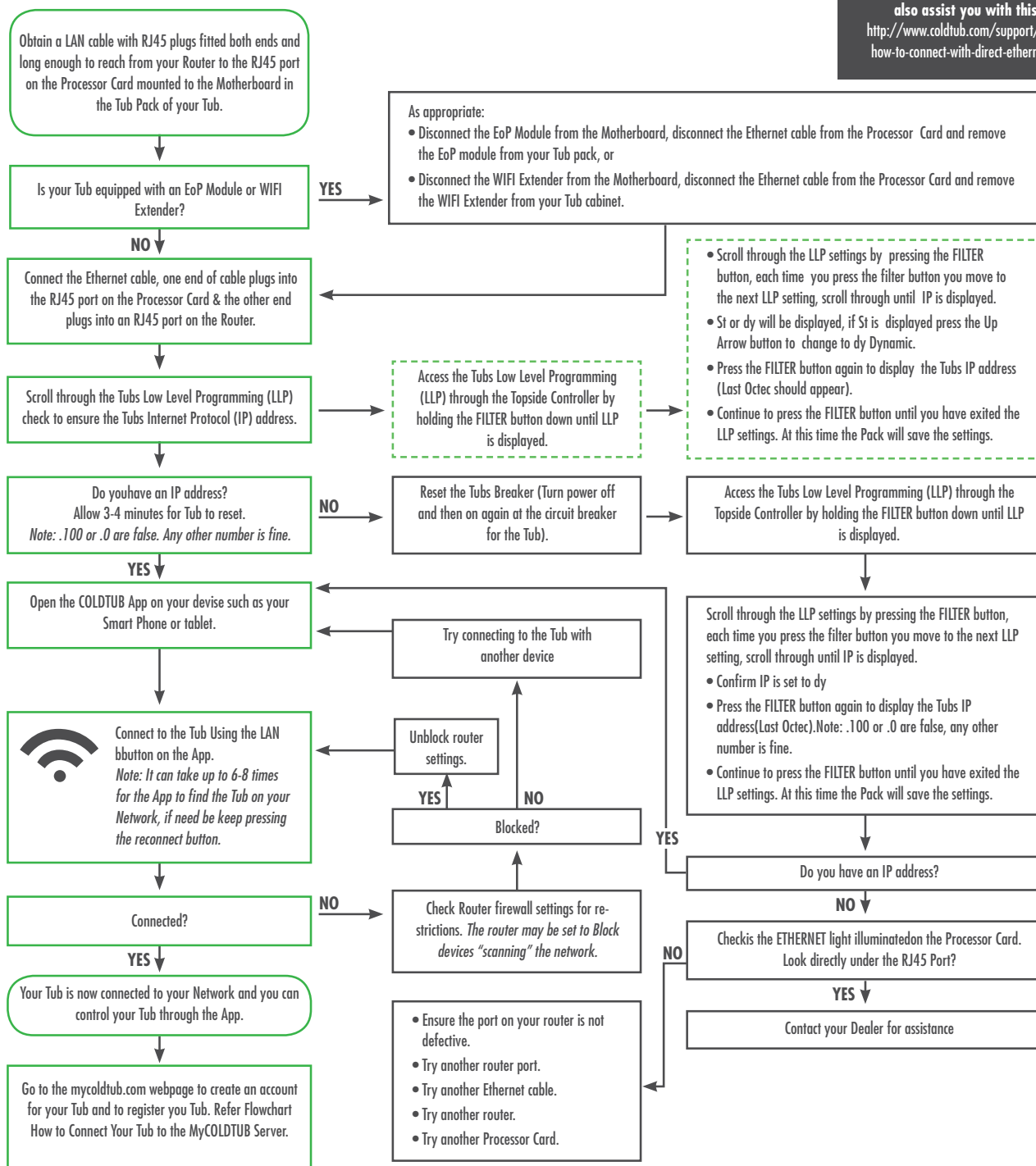


1.10 COLDTUB App QRC Through LAN Cable Flowchart

The following flowchart shows how to connect COLDTUB App through connecting a LAN cable to the RJ45 Port on your COLDTUBs Processor Card and the other end connected to an RJ45 Port on your Home Router.

The following Supportive Video Link may also assist you with this process:

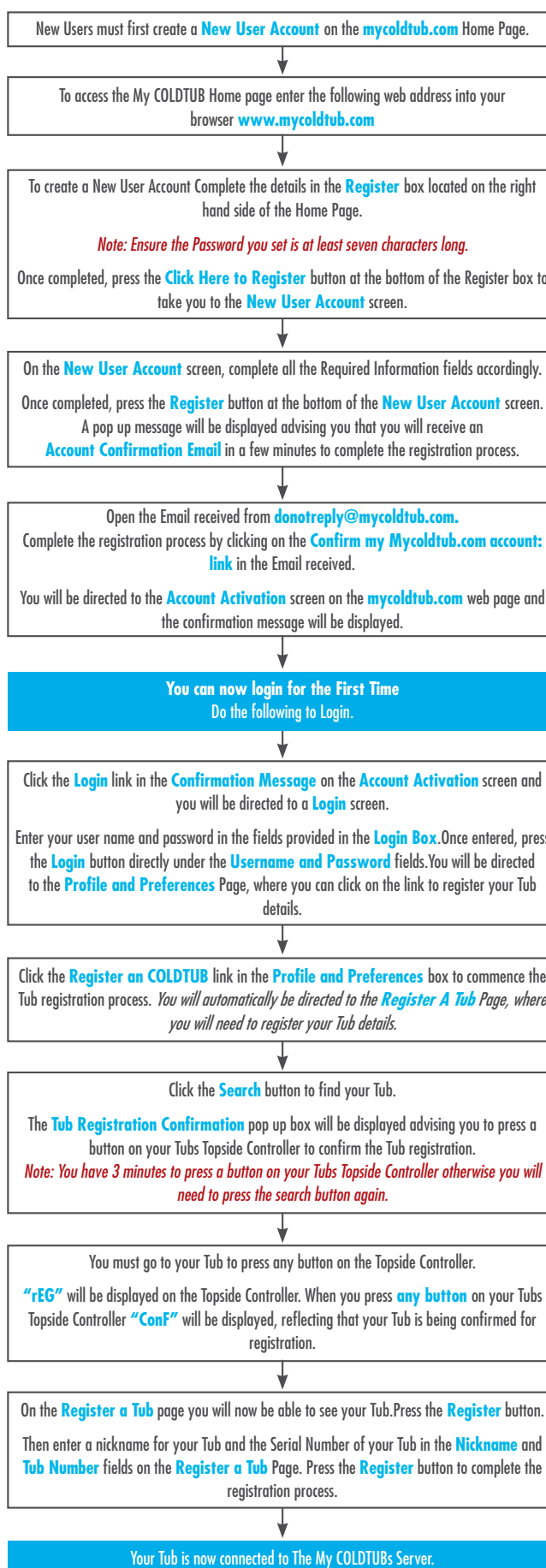
<http://www.coldtub.com/support/how-to-videos/how-to-connect-with-direct-ethernet-connection/>



1.11 How to Connect Your COLDTUB to the My COLDTUB Server (Web Connect) Flowchart

The following flowchart shows how to open a free account with mycoldtub.com and register your COLDTUB on the server linked to the mycoldtub.com webpage.

Once completed, your COLDTUB will be fully functional through Web Connect



The following Supportive Video Link may also assist you with this process:

<http://www.coldtub.com/support/how-to-videos/how-to-connect-coldtub-to-the-my-coldtub-server/>

NOTE: Once you have logged in for the first time and registered your Tub details within mycoldtub.com, logging into mycoldtub.com is achieved from accessing the My COLDTUB home page.

Login by entering your user name and password in the fields on the upper right hand side of the home page.

Once entered press the **Login** button directly under the Username and Password fields. Once logged in, My COLDTUB will automatically open your personal My COLDTUB page.

NOTE: You will receive a prompt to reflect that your Tub must be connected to the Internet (Your Network). **You must have first connected your Tub to your network** using the App on your device such as a Smart Phone or tablet. This will have been achieved with a WIFI connection using either EoP, WIFI Extender or LAN connection.

The Tubs Serial No. can be located on the **Metal Compliance Plate** mounted to your Tub just above the Bottom Rail and between two doors. You only need and register the number portion of the complete Serial No. Eg Tub Serial No. AX16KX178910, **17890** is the portion of the Serial No. required to be recorded.

Through **mycoldtub.com** you now have direct access to all your Tubs Functions and Settings from anywhere in the world where internet access is available through your smart phone, tablet or computer.

1.12 My COLDTUB

The following is a brief outline of My COLDTUB.

Mycoldtub.com is a Web based after sales support system designed and built by COLDTUBs especially for COLDTUBs owners allowing owners access to the full benefits of owning an COLDTUBs COLDTUB.

The My COLDTUB Server has been designed to receive data from your COLDTUB over the internet through your network system. The data is logged and saved to the My COLDTUB Server on a continual basis.

My COLDTUB has been designed to:

- Receive data from your COLDTUB over the Internet through your network which has been connected to your COLDTUB. The data is logged and saved on the My COLDTUB Server on a continual basis.
- If COLDTUB Pal is equipped in your COLDTUB, send automated email notifications to the COLDTUB owner when the pH level of the COLDTUBs water is outside the required range (out of balance).

The following pages make up the My COLDTUB Web site:

- Home.
- Register.
- Login.
- Settings.
- Documentation.
- Error Codes.
- About.
- Profile.
- Diagnostics.
- Logout.

As you can see from the above, My COLDTUB clearly places COLDTUBs owners another milestone ahead of owners of other brand COLDTUBs.

Register and enjoy the experience.

1.12.1 Home Page

To access the My COLDTUB Home page enter the following web address into your browser.

www.mycoldtub.com

For a new user, the user must first create a new user account by completing the details in the Register box located on the right hand side of the Home Page.

For a registered user, click on the Login button located on the upper right hand side of the **Home Page**.



1.12.2 New User Registration

For a new user, to create a user account complete the details in the **Register** box located on the right hand side of the Home Page.

Note: password must be at least seven characters long.

Once completed, press the Click Here to **Register** button at the bottom of the Register box on the Home Page.



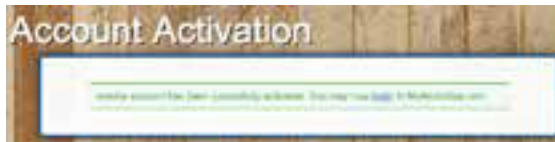
You will now have been directed to New User Account screen.

Complete all the Required information fields accordingly.

Once completed, press the **Register** button at the bottom of the New User Account screen.

You will then receive an Account Confirmation Email from My COLDTUB.

Once you receive the email complete the registration through confirming your email address by clicking on the LINK in the email received.



You will be directed to the Account Activation screen on the mycoldtub.com Web page, and the confirmation will be displayed.

1.12.3 Login First Time

Before you login for the first time you should first ensure your COLDTUB has already been connect your network.

You can now login by clicking the login link on the Account Activation screen and entering your user name and password in the fields provided in the Login box.

You will automatically be directed to the Profile and Preferences Page, where you will need to register your COLDTUB details.

Note: Once you have logged in for the first time and registered your COLDTUB details within mycoldtub.com, logging into mycoldtub.com is achieved from accessing the My COLDTUB home page Log in by entering your user name and password in the fields on the upper right hand side of the home page. Once logged in, My COLDTUB will automatically open your personal My COLDTUB Page.

1.12.4 Register a COLDTUB

To register your COLDTUB details click the **Register a COLDTUB** link in the **Profile and Preferences** box.

You will receive a prompt to reflect that your COLDTUB must be connected to the Internet (Your Network). Click the Search button to find your COLDTUB. The **COLDTUB Registration Confirmation** pop up box will be displayed advising you to press a button on your COLDTUBs Topside Controller to confirm the COLDTUB registration.

You must go to your COLDTUB and press any button on the Topside Controller.

‘REG’ will be displayed on the Topside Controller. When you press any button on your COLDTUBs Topside Controller **“Conf”** will be displayed, reflecting that your COLDTUB is being confirmed for registration.

On the **Register a COLDTUB** page you will now be able to see your COLDTUB.

Press the **Register** button.

Then enter a nickname for your COLDTUB and the Serial Number of your COLDTUB in the **Nickname** and **COLDTUB Registration** fields on the **Register a COLDTUB** Page.

Press the Register button to complete the registration process.

Your COLDTUB will now be connected to the My COLDTUB server



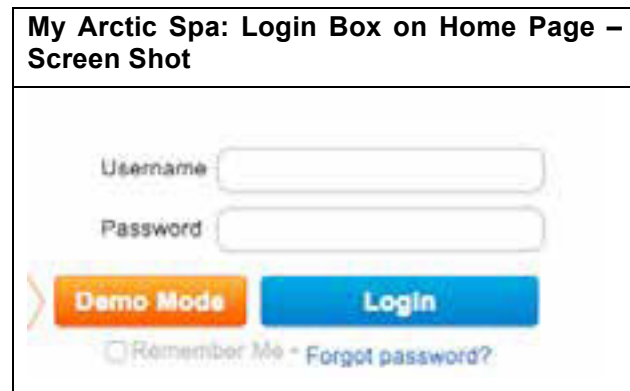
1.12.5 Login

Once you have logged in for the first time and registered your COLDTUB details within My COLDTUB, logging into My COLDTUB is achieved from accessing the My COLDTUB home page. Login by entering your user name and password in the fields on the upper right hand side of the home page.

Once entered press the **Login** button directly under the Username and Password fields.

Once logged in, My COLDTUB will automatically open your personal **My COLDTUB** page.

*Note: If you have forgotten your password you can press the **Forgot Password** button to re-establish your password.*



1.12.6 My COLDTUB

Once you have logged in, My COLDTUB will have automatically directed you to, your **My COLDTUB** page.

If your COLDTUB is connected to the internet through your network you can see if your COLDTUB is in use, adjust the temperature and turn on and off components if desired

From this page you are able to explore the My COLDTUB web pages by clicking the desired tab along the horizontal tool bar.

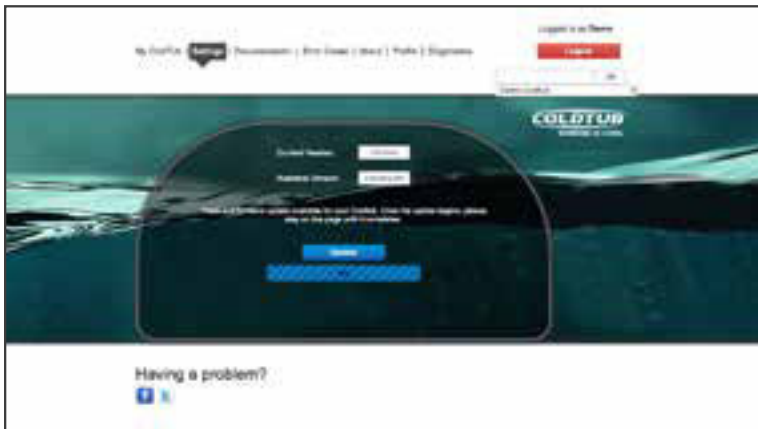


1.13.1 Settings

Click on this tab to access the Settings page.

From this page, you can see your COLDTUBs currently producing Sanitizer (Sanitizing) adjust the following settings of your COLDTUB:

- Filtration
- Firmware Upgrade

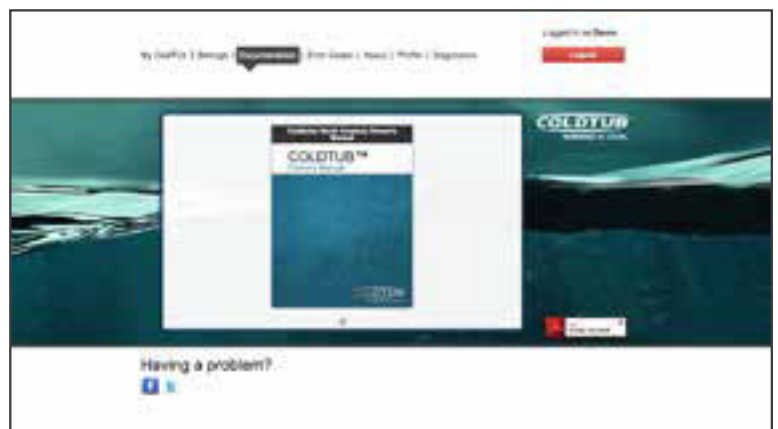


1.13.2 Documentation

Click on this tab to access the Documentation page.

This page provides you easy access to:

- Owners manual
- Networking guide
- COLDTUB App user guide
- Other cool stuff
- Quick Reference Cards

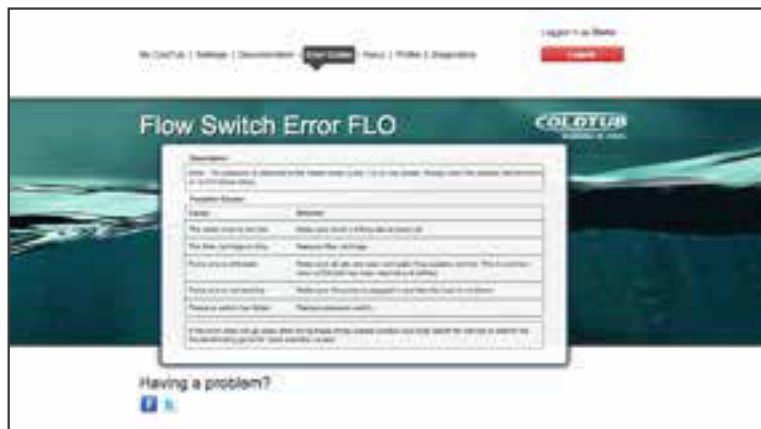


1.13.3 Error Codes

Click on this tab to access the Error Codes page.

This page provides you quick access to error code descriptions, possible causes and solutions for error codes that will be displayed on your COLDTUBs topside controller, in the unlikely event of a system warning linked to a possible component fault, such as:

- Flow switch error - FLC.
- Flow switch error - FLO. Or HPT
- High limit error - HL.
- High limit temp probe error - HL.
- Temp probe error - PRR.

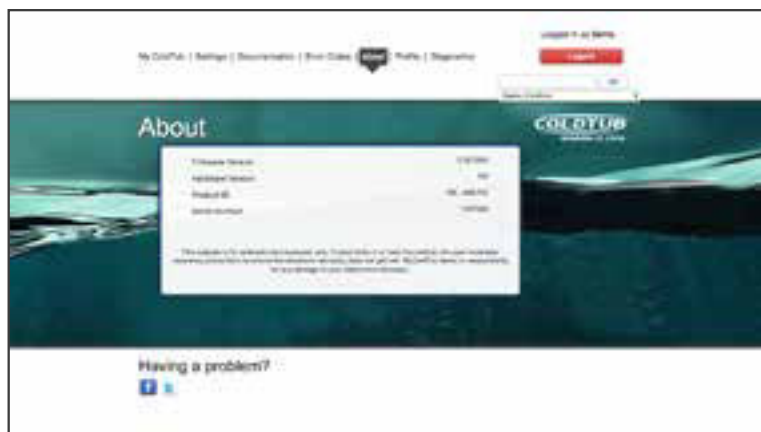


1.13.4 About

Click on this tab to access the About page.

This page displays the following details about your COLDTUB:

- Firmware version load.
- Hardware version.
- Product ID.
- COLDTUB serial number.

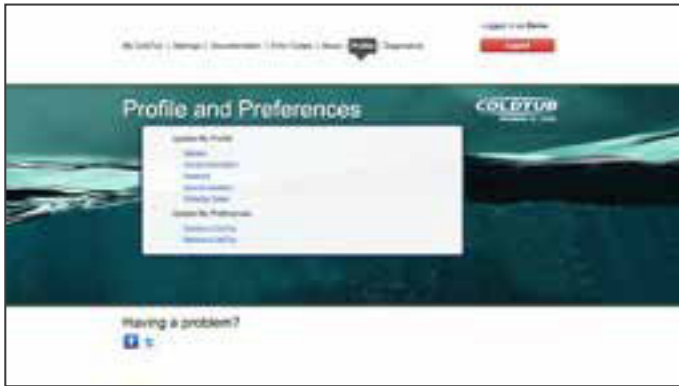


1.13.5 Profile

Click on this tab to access the Profile page.

This page is used to:

- Update your personal details such as email and password.
- Update your preferences such as register and remove a COLDTUB from My COLDTUB.



1.13.6 Diagnostics

Click on this tab to access the Diagnostics page.

This page is used to access the data that has been transmitted from your COLDTUB to My COLDTUB. Data such as, but not limited to the following is captured:

The data can be used by the COLDTUBs owner to determine and track their COLDTUBs power consumption.



1.13.7 Logout

To logout of My COLDTUB press the Logout button on the horizontal tool bar in the right hand upper corner of the screen.

Once out, enjoy your COLDTUB!

1.14 COLDTUB Wifi Extender Quick Reference

Instructional video can be found at : <https://youtu.be/TfmmXDgDGQs>

The computer you are using to connect to the wifi extender can not have a hard wired internet connection (Ethernet cord attached from home router/network to computer)

- Find Tenda on in your WIFI search and connect to the TENDA unit
- Once connected to the TENDA open your web browser type re.tendacn.com
(Your computer will say not connected to internet, this ok)
- Tenda log in page will appear. Password- admin
- This opens a wizard
- Press Scan
- Find your network, select it on the list and press OK to confirm.
- Type in your network password.
- Press Save
- The Tenda will preform a reboot.
- Once reboot is complete reset the tub breaker and wait for the tub to start up(about 3min)
- Connect your phone to your Network and open the app. select the wifi symbol to connect to theCOLDTUB
- Press CONNECT, It will search for the tub. This may take several attempts to connect the first time.



COLDTUB™
WINNING IS COOL

#19397